

## Referee Game Scheduler

The Referee Scheduler program is relatively easy to work with. You may need to make one setting change on your computer in Internet Explorer for it to work properly; this setting change is described later in this document. You will see a read only and a login link. For a quick look to see who is scheduled for a game you can use the read only link. If you are making changes you will need to login to the scheduler program.

After you click on the link to login you will see a page asking you to put in your username and password. If you do not know your username and password please contact either the Referee Administrator (RA) at [RefereeAdmin@206soccer.com](mailto:RefereeAdmin@206soccer.com) or the Assistant Referee Administrator at [RefereeAdminAsst@206soccer.com](mailto:RefereeAdminAsst@206soccer.com).

**Please sign in**

Username:

Password:

Once logged in you will see a list of games and available referee slots for those games. You may see the referee signup area similar to the one to the below.

Center

AR

AR

[Available](#)

[Available](#)

[Available](#)

If you click on "Sign In" and there are no boxes available to sign up as shown above and instead you see a screen similar to the one below then you are not signed in correctly with the right username or password and you cannot sign up for games. You will need to close the screen and try and login again. If you are still unsuccessful then please contact either the RA at [RefereeAdmin@206soccer.com](mailto:RefereeAdmin@206soccer.com) or the Assistant Referee Administrator at [RefereeAdminAsst@206soccer.com](mailto:RefereeAdminAsst@206soccer.com) for assistance.

Center

AR

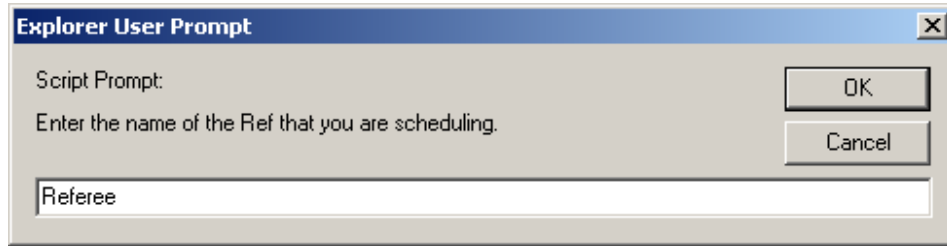
AR

Referee

Referee2

To sign a referee up for a game you will need to click on a spot labeled as "Available" from here two options may happen depending on your rights to the scheduler program. The first option will be that the system will automatically put in your name for the referee slots that you have chosen. If this does not happen the second option is that a popup box will appear. In the popup you will need to type in the referee's name and click OK. A screen shot of this popup is displayed below. This will sign the person up for the game. If the popup box is not displayed and it does not automatically put in

your name into the system then you will need to make a setting change on your computer. Please scroll down to the section labeled as **Setting Change**



Once you have signed up a referee for a game if you see the “Rem” function next to their name you also have the ability to remove them from the game. If it is a slot that the ARA assigns referee to such as the Center please work with the ARA so they are aware of a person needing to be removed and know that they need to work on filling that slot.

| Center                      | AR                        | AR                        |
|-----------------------------|---------------------------|---------------------------|
| Referee <a href="#">Rem</a> | <a href="#">Available</a> | <a href="#">Available</a> |

If the “Rem” function is not available you do not have the rights and will need to with through the RA to change your schedule of games assigned.

| Center  | AR       | AR                        |
|---------|----------|---------------------------|
| Referee | Referee2 | <a href="#">Available</a> |

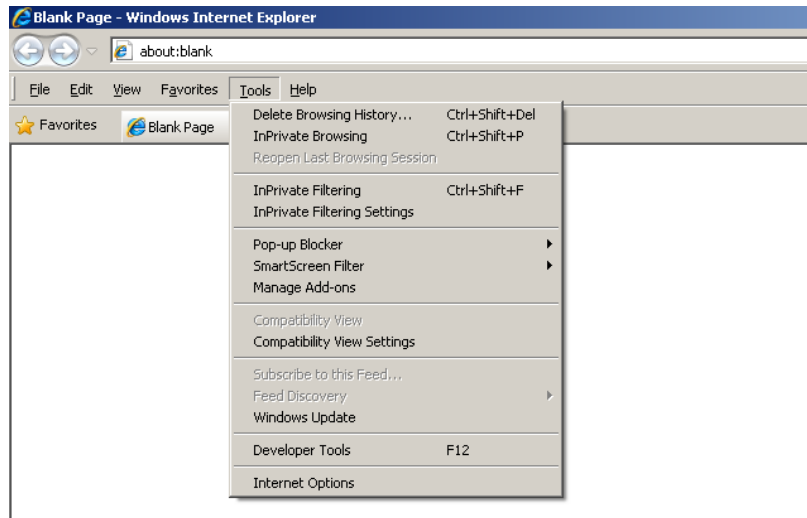
If you see a game that has an open referee slot but is not “Available” for you to sign up for this is because of your current referee badge level is lower than what is preferred for this game. Please work with your RA to see if you can help referee that game and also ask to see when the next upgrade referee class is.

| Center  | AR       | AR |
|---------|----------|----|
| Referee | Referee2 |    |

## Setting Change

If you are having a problem when adding referees please follow these instruction. Below are screen shots of Internet Explorer 8. The problem has been seen with Internet Explorer 7 and 8.

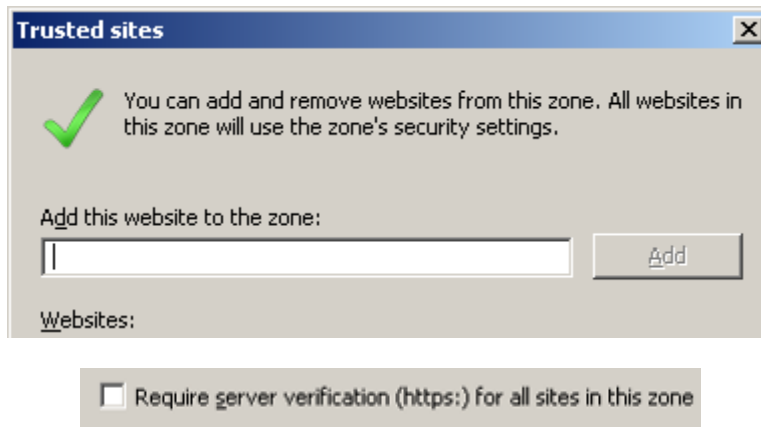
Go to Tools and Internet Options



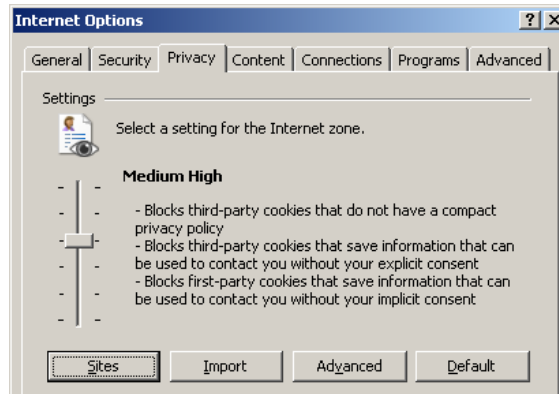
Click the Security Tab and then click Sites



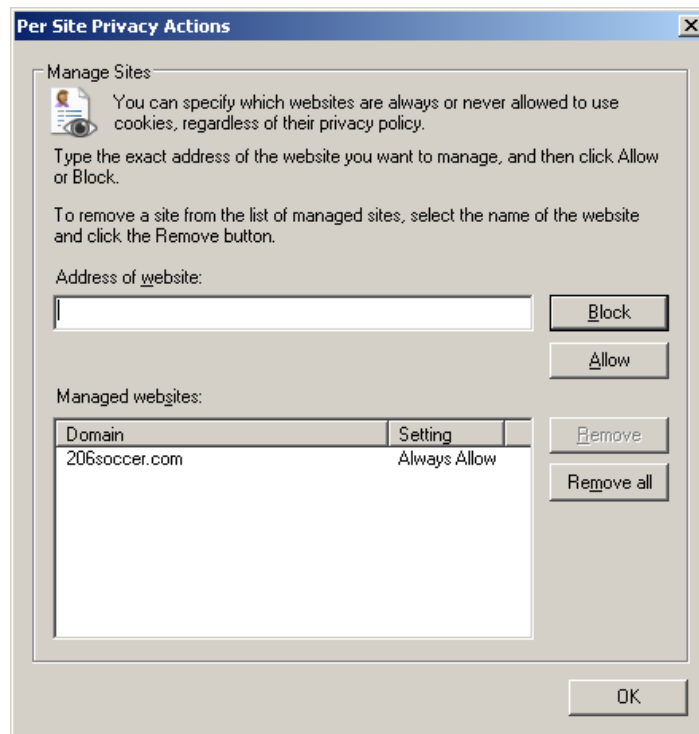
Type <http://www.206soccer.com/>, uncheck "Require server verification", and then click add. Then click close. You will see the screen below.



Click on Privacy tab and then click on Sites.



Type 206soccer.com and click allow.



Click OK and then click OK again. Close Internet Explorer and reopen. Problem should be fixed.